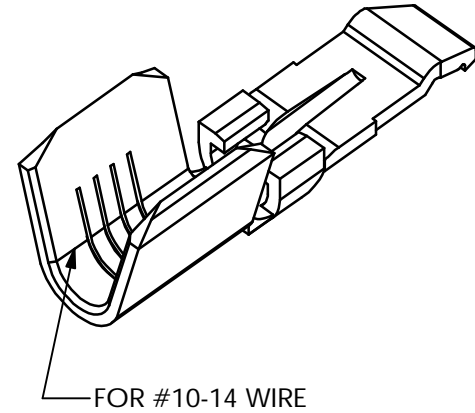
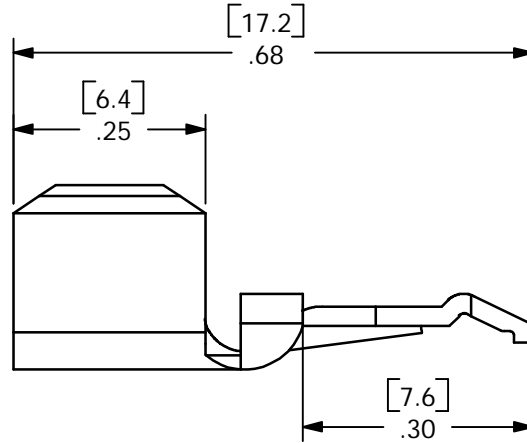
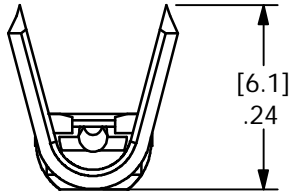
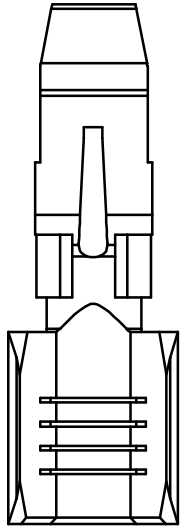


THE INFORMATION CONTAINED IN THIS DRAWING IS THE SOLE PROPERTY OF ANDERSON POWER PRODUCTS. ANY REPRODUCTION IN PART OR WHOLE WITHOUT THE WRITTEN PERMISSION OF ANDERSON POWER PRODUCTS IS PROHIBITED.

REV.	DESCRIPTION OF CHANGES	BY:	DATE



NOTE: CONTACT SPACING ON REEL .60 [15.2] FOR EXTRA FLEXIBLE WIRE

ANDERSON POWER PRODUCTS RESERVES THE RIGHT TO ALTER PRODUCT TYPES, THEIR TECHNICAL DATA, DIMENSIONS, STYLE AND ACCESSORIES WITHOUT PRIOR NOTIFICATION, UTILIZATION OF THIS DRAWING FOR ANY OTHER PURPOSE OTHER THAN GENERAL INFORMATION IS NOT PERMITTED WITHOUT PRIOR WRITTEN CONSENT.

ITEM NO.	PART OR IDENTIFYING NO.	NOMENCLATURE OR DESCRIPTION	MATERIAL SPECIFICATION	QTY RECD
COPYRIGHT 1999 ANDERSON POWER PRODUCTS. ALL RIGHTS RESERVED. UNAUTHORIZED REPRODUCTION HEREBY PROHIBITED.				
DIMENSIONS ARE IN INCHES DIMENSIONS IN PARENTHESES [] ARE IN MILLIMETERS		CAD GENERATED DRAWING, DO NOT MANUALLY UPDATE		ANDERSON POWER PRODUCTS
TOLERANCES ARE: 2PL- ±.02 [±.5]		APPROVALS	DATE	
MATERIALS: <i>COPPER</i>		DRAWN	GN 6/30/99	CATALOG #201G1H HIGH DETENT REEL CONTACT FOR POWERPOLES TYPE "F" CRIMP
FINISH: <i>HOT TIN DIP</i>		CHECKED	DJD 9/19/00	
NEXT ASSY	USED ON	RESP ENG	UFN 9/20/00	SPECIFICATION: 114117S1
APPLICATION	DO NOT SCALE DRAWING	MFG ENG	CHB 9/18/00	
		QUAL ENG	RPO 9/19/00	REV. 0
		SCALE	NONE	CADFILES/ 00982
				SHEET 1 OF 1

8 | 7 | 6 | 5 | 4 | 3 | 2 | 1